

AUGUST 12, 2024

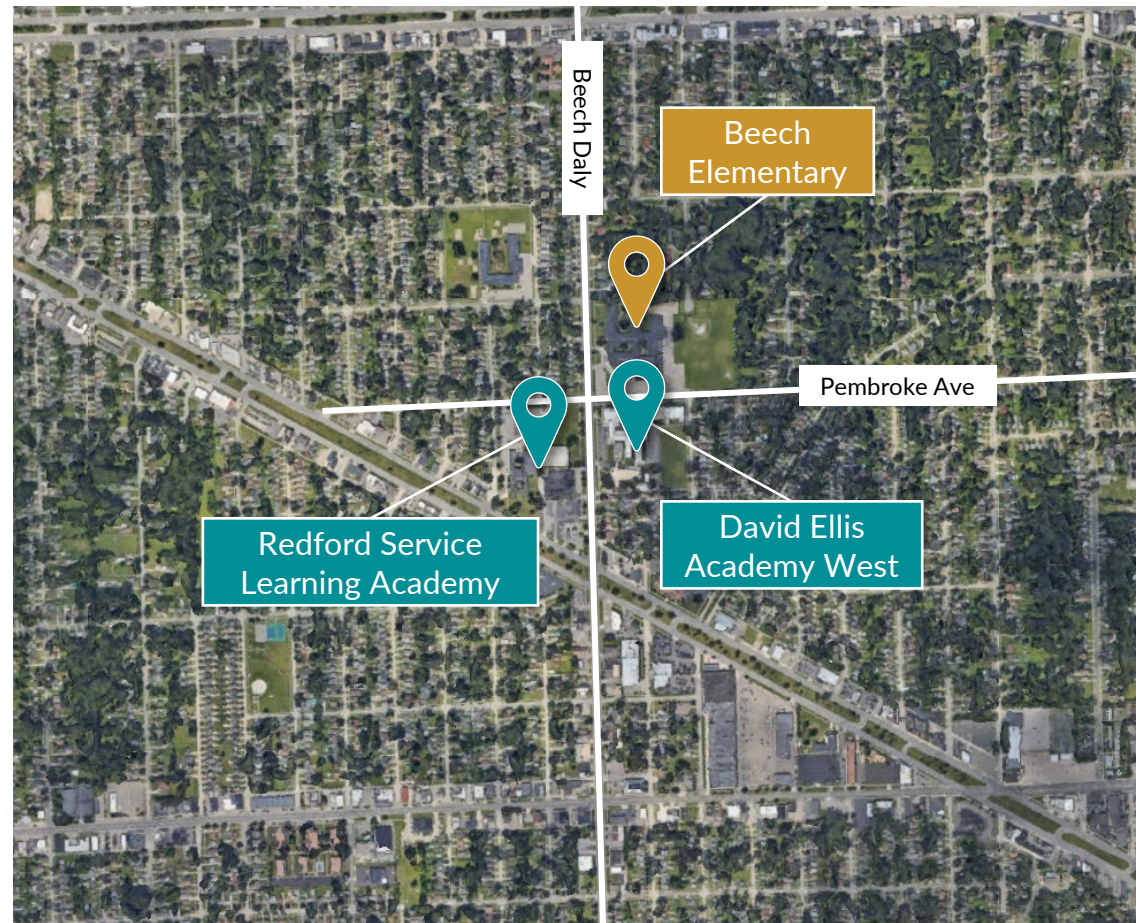


Beech Elementary School Bus Loop Project

Presented to: Redford Union School District

Current Safety Concerns at Beech Elementary

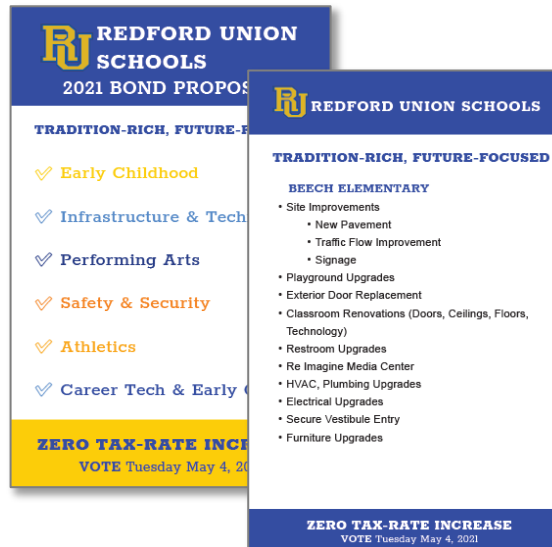
- Student safety is RUSD #1 priority.
- Traffic backs up with 3 schools at the corner of Beech Daly and Pembroke during student drop-off and pick-up.
- Congestion/delays are significant and often require Redford Twp. Police Dep't. intervention.
- More students get dropped off today than in years past, with less kids walking or taking the bus.
- Bus traffic and parent traffic often get co-mingled.



2021 Bond Program to Address Safety Concerns

- During the bond campaign, RUSD met with Redford Twp. Representatives to discuss the overall bond projects including the Beech Elementary bus loop.
- Bond campaign marketing material outlined the work included to improve traffic flow.
 - Public Presentation(s)
 - Exterior A-Frame Signs
 - 4x6 cards
 - Informational handouts
- Bond Scope was approved by the State of Michigan in early 2021

Exterior A-Frame Signs



Bond Presentation



Information Handouts



4x6 Cards

2021 Bond Approved by Community

Bond approved on May 4, 2021



THANK YOU!

THANKS TO
YOUR SUPPORT,
THE 2021 BOND
PROPOSAL
WILL BE ABLE
TO ADDRESS:

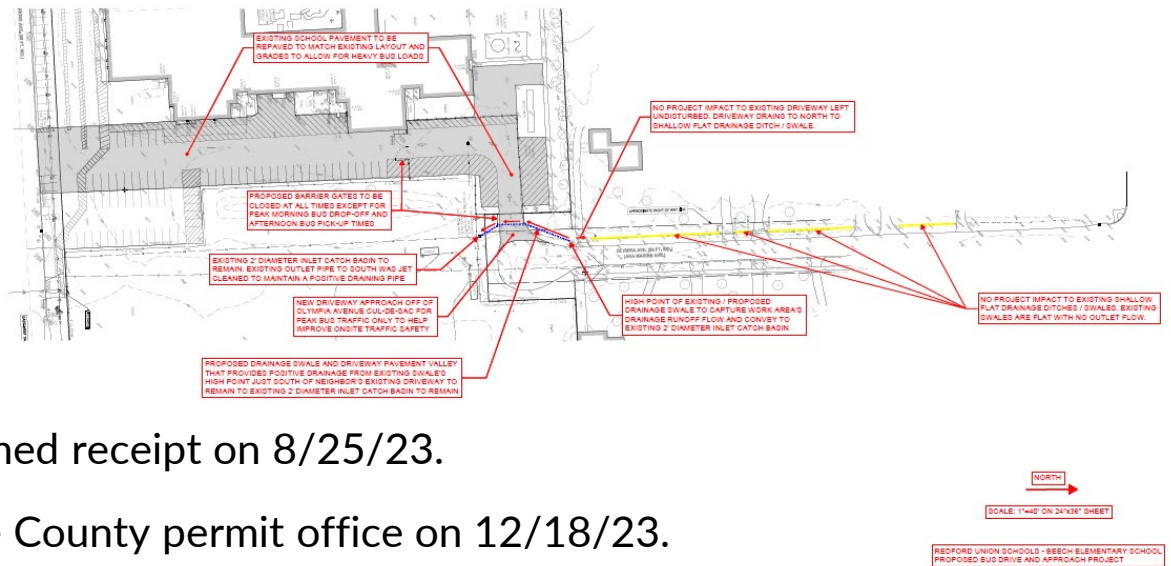
To learn more about our plan of action, go to:
www.redfordu.k12.mi.us



TRADITION-RICH, FUTURE-FOCUSED

Design and Construction

- Initial bus loop project redesigned to impact less green space, be more fiscally responsible, and meet Wayne County standards during spring/summer 2023.
- Plans submitted to Wayne County permit office on 8/23/23.
- Wayne County permit office confirmed receipt on 8/25/23.
- OHM sent approval letter to Wayne County permit office on 12/18/23.
- Wayne County permit office sent approval letter and permit instructions on 1/17/24.
- Project formally publicly advertised and issued for bid on 2/12/24.
- Sealed bid proposals received from subcontractors on 2/28/24.
- Project overview presented to Board of Education (BOE) at public meeting on 3/11/24.
- Project award recommendation presented to and approved by BOE at public meeting on 4/8/24.
- Construction started on-site on 6/17/24.
- Construction substantial completion scheduled for 8/26/24.



Project Design Highlights

- Minimal impact to cul-de-sac on school days only
- Entrance drive is to be utilized by buses only for student morning drop-off and afternoon pick-up.
- A minimal amount of buses to utilize the drive each day. (Currently 6-8 buses at drop-off and pick-up.)
- Gates will be installed to close-off the approach when not utilized by the buses.
- New drive approach will help alleviate congestion on Beech Daly and Pembroke and improve safety for students and public.
- Buses to enter from the North off Olympia and exit at the South to Pembroke.



BOE COMMENTS/QUESTIONS